

Winjet variPrint CP2280

Roll-to-Roll Color Laser Printer

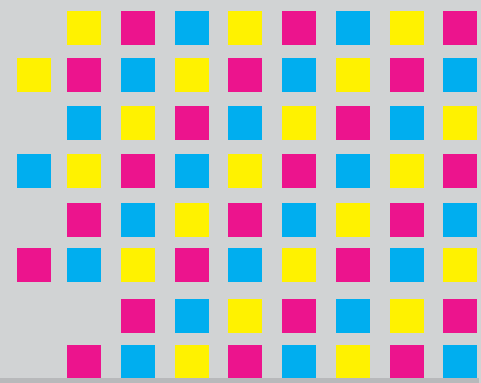
winjet



Print Fast

Communicate Efficiently





Your Best Partner for Printing Solutions

Features	Items	Descriptions
Print Quality	Resolution	1200 x 600 dpi
Performance	Print Speed	Max. 30 ft/min. (9.14 m/min.)
	Warm-up Time	Less than 85 sec.
	Printing Area per Page	Width 5.0" - 12.6" (127 mm – 320 mm) Length 5.0" - 50.0" (127 mm – 1270 mm)
Media Handling	Media Size	Width 5.0" - 12.6" (127 mm – 320 mm)
	Paper Capacity	Max. Outer Diameter of Paper Roll: 11.8" (300.0 mm)
	Paper Weight	70 gsm to 150 gsm
Dimensions		1528 mm (L) x 677 mm (W) x 1250 mm (H), 236 kg
Compatibility	Connectivity	10 Base-T / 100 Base-TX / 1000 Base-T Ethernet Card with Internal Web Server
	Operating Systems	Windows®7, Vista®(32-/64-bit); XP Professional x64, XP Home; Server 2003 Standard/Enterprise/Datacenter Editions; Server 2003 x64 (SP1); 2000 Professional, 2000 Server, 2000 Advanced Server (SP4 or Later)
	Network Protocols	TCP/IP; NetWare®; EtherTalk
Environmental	Temperature /Humidity	Operating: 50.0°F to 89.6°F (10°C to 32°C), 20% to 80% RH Storage: -4.0°F to 113.0°F (-20°C to 45°C), 10% to 90% RH
	Power Requirements	Printer Engine: 110–127 VAC, 50/60 Hz, 10A or 220–240 VAC, 50/60 Hz, 6A Unwind/ Rewind System: 100–240 VAC, 50/60 Hz, 1.6A
	Power Consumption	Printer Engine Operating: Peak 1500W Printer Engine Standby: Peak 600W Unwind/Rewind System Operating: Peak 225W Printer at Power Save Mode: Peak 34W

Specifications shall be subject to any changes without additional notices.

KPOWERSCIENCE CO., LTD.

8FL., NO.276, SEC.1, TA-TUNG RD., HSI-CHIH DIST., NEW TAIPEI CITY, TAIWAN
 TEL: 886-2-2647-5855
 FAX: 886-2-2643-1151
 Website: www.winjet-printers.com
 E-mail: jingyang@kpower.com.tw

Copyright © Kpowerscience Co., Ltd. All rights reserved.



30 ft/min

High Quality

Variable Data Printing