

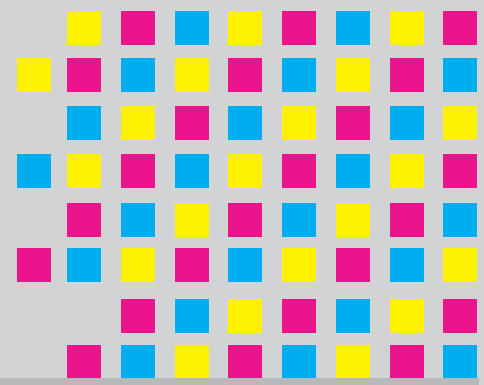
# Winjet variShape LF600lw

## Digital Label Finisher

**winjet**



***Diversify Your Labels with Digital Die-Cutter***



Your Best Partner for Printing Solutions

Lamination

Digital Die Cut

Waste Removal

Items	Descriptions
Features	Lamination, Digital Die Cutting & Waste Removal
Max. Cutting Area	300 mm (W) x 420 mm (L) per page
Roll Paper Width	140 mm - 320 mm
Max. Cutting Force	4.41N (450 gf) in 38 steps
Max. Cutting Speed	600 mm/s
Blade Type	Super-Steel
Media Type	Self-Adhesive Marking Film (Vinyl, Fluorescent, Reflective) Excluding High-Intensity Films
Perforation Cutting	Yes (Performed by Force Control)
Interface	RS-232C, USB2.0 (Full Speed)
Buffer Memory	2 MB
Display	Die-Cutter: LCD 240 dots x 128 dots
Dimensions	1982 mm (L) x 744 mm (W) x 1436 mm (H), 300 kg
Supported Software	CorelDraw™ 10 to X7; Adobe Illustrator™ CS to CC (2015)
Power Requirements	Die-Cutter: 100-240 VAC, 50/60 Hz Label Finisher System: 100-240 VAC, 50/60 Hz
Operating Environment	10 °C to 35 °C, 35 % to 75 % RH

Specifications shall be subject to any changes without additional notices.



**KPOWERSCIENCE CO., LTD.**

8FL., NO.276, SEC.1, TA-TUNG RD., HSI-CHIH DIST., NEW TAIPEI CITY, TAIWAN  
TEL: 886-2-2647-5855  
FAX: 886-2-2643-1151  
Website: www.winjet-printers.com  
E-mail: jingyang@kpower.com.tw

Copyright © Kpowerscience Co., Ltd. All rights reserved.