

Winjet ML5500W

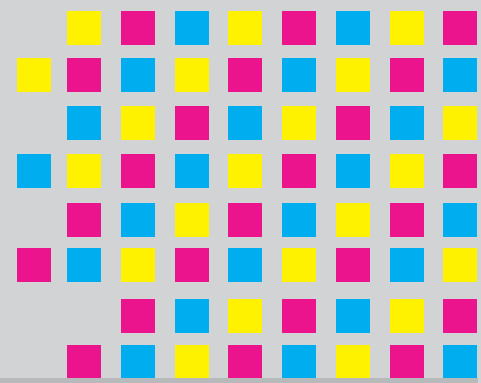
Continuous Laser Printer

winjet



Print Fast

Communicate Efficiently



Your Best Partner for Printing Solutions

Main Features	Color	Black (Monochrome)	Dimensions	Width	780 mm	
	Print Method	Electrophotography Process, LED Array		Length	890 mm (1,340 mm with Stacker)	
	Resolution	300 x 300 dpi / 600 x 600 dpi		Height	1,360 mm	
	Printing Area	Print Speed	5,500 lpm (6 lpi)	Environments	Power Requirements	Universal (200~240 VAC, 50/60 Hz)
		Developing Method	Dry, Two-Ingredient Developer		Temperature	Operating: 15~28°C Non-Operating: -10~35°C
		Fusion Method	Flash (Xenon Lamp) and IR Fusing System		Humidity	30~80 % RH
		Paper	Paper Feed	Continuous with Pin Feed (Auto Loading)	Consumable Life	Toner
Page Length			Max. 20"	Developer		300K pages
Paper		Width	Max. 17"	Image Performance		Developer Unit
	Type	Fanfold Continuous Paper	OPC Cartridge			300K pages
	Width	6~18 inches	I.D. Set		0.8~1.1 (step 0.1)	
	Page Length	7~20 inches without Power-Stacker 7~14 inches with Power-Stacker	Toner Mark	NULL		
	Thickness	3~11 mil	Unevenness in I.D.	1.0 ± 0.2		
	Weight	60~204 g/m ²	Guarantee of Print Quality	Except ± Some Length from Perforation Line		
	Others	Label Stock etc.	Controllers (optional)	OS	Windows, PC Based Controller	
	Supply Capacity	3,000 pages (64 g/m ²)		Video I/F Card	PCK600 (for PCI Slot)	
Stacker Capacity	3,000 pages (64 g/m ²)	Ethernet		100BASE-TX/100BASE-T, IPV6 Support 100BASE-TX/1000BASE-T, IPV6 Support		
B/W Ratio Black	Max. 20 %	Interface		TCP/IP LPR, RAW, Parallel (Option)		
Reliability	Monthly PV	600K pages (A4 Landscape)		Emulation	ULPC, ESC/P, PCL5, PostScript, IPDS (Option), AFP (Option)	
	M/C life	5 years or 48,000,000 pages (A4 Landscape)		Code	Big-5, GB2, UTF-8	
	MTBF	2,000 hours		Symbols	OCR Font Barcode: 25 Code, 39 Code, 128 Code, UPC/EAN Code 2D Barcode: QR-Code, PDF-417	
	MTRR	1 hour		System Environment	Microsoft Windows 2000/XP/7/8 (32/64 Bit), UNIX, Linux, Unisys Microsoft Windows 2003/2008/XP /7/8/10(32/64 Bit), UNIX, Linux	
Weight	282 kg (327 kg with Stacker)	PS Driver & PC Driver		Windows		

Specifications shall be subject to any changes without additional notices.



KPOWERSCIENCE CO., LTD.

8FL., NO.276, SEC.1, TA-TUNG RD., HSI-CHIH DIST., NEW TAIPEI CITY, TAIWAN

TEL: 886-2-2647-5855

FAX: 886-2-2643-1151

Website: www.winjet-printers.com

E-mail: jingyang@kpower.com.tw

Copyright © Kpowerscience Co., Ltd. All rights reserved.