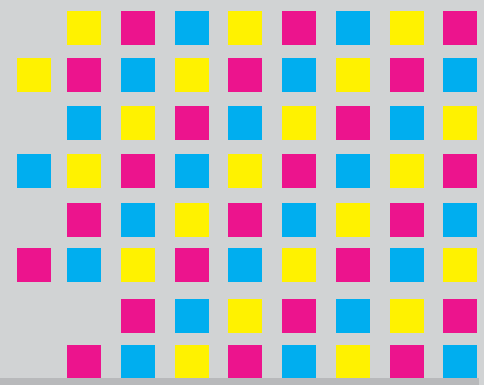


Winjet variPrint CP1700

Roll-to-Roll Color Laser Printer



Print Fast
Communicate Efficiently



Your Best Partner for Printing Solutions

Features	Items	Descriptions
Print Quality	Resolution	1,200 x 2,400 dpi
Performance	Print Speed	Up to 7.26 m/min.
	Printable Area	Width: 89.2 – 304.0 mm Length: 98 – 1,200 mm
Media Handling	Type of Media	Paper, high glossy paper, matt paper, PET, PP, PE, ect...
	Media Size	Width: 140 – 340 mm Outer diameter of web roll: Max. 450 mm
	Paper Thickness	60 – 280 µm
Dimensions		1,600 mm (L) x 750 mm (W) x 1,400 mm (H), 423 kg
Compatibility	Connectivity	10 BASE-T / 100 BASE-TX, USB 2.0 (Standard) Internet 1000 BASE-T, IEEE 1284-B (Options)
	Processor	933 MHZ, 2G
Environmental	Temperature /Humidity	68.0 – 73.4°F (20 – 23°C), 45 – 55% RH
	Power Requirements	110 – 127 VAC , 50/60 Hz, 2800 W; 220 – 240 VAC, 50/60 Hz, 2800 W

Specifications shall be subject to any changes without additional notices.

KPOWERSCIENCE CO., LTD.

8FL., NO.276, SEC.1, TA-TUNG RD., HSI-CHIH DIST., NEW TAIPEI CITY, TAIWAN
 TEL: 886-2-2647-5855
 FAX: 886-2-2643-1151
 Website: www.winjet-printers.com
 E-mail: jingyang@kpower.com.tw

Copyright © Kpowerscience Co., Ltd. All rights reserved.



7.26 m/min.

Color Printing

Variable Data Printing